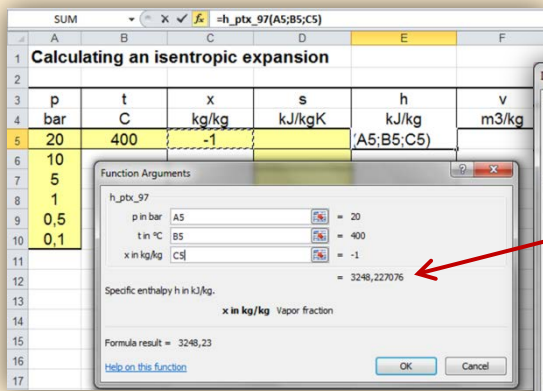


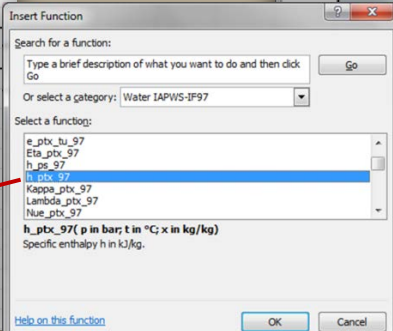


Property Software for Calculating Heat Cycles, Boilers, Turbines and Refrigerators

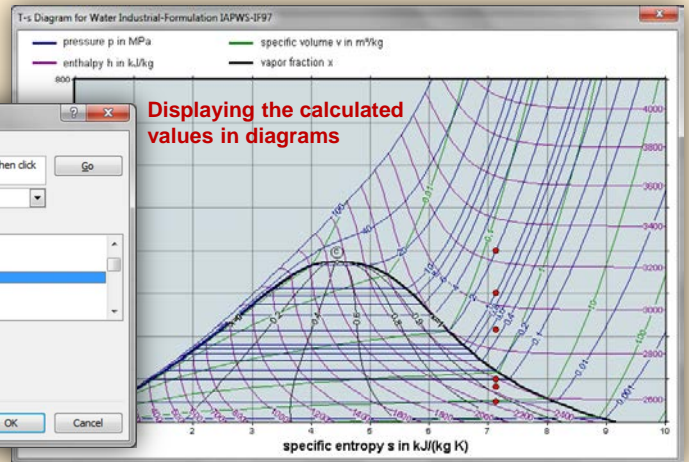
Add-In FluidEXL^{Graphics} for Excel[®]



Choosing a property library and a function



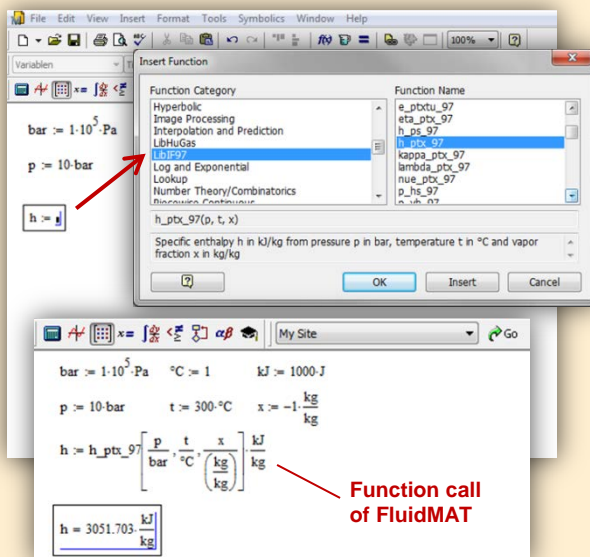
Displaying the calculated values in diagrams



Menu for the input of given property values

Add-In FluidMAT for Mathcad[®]

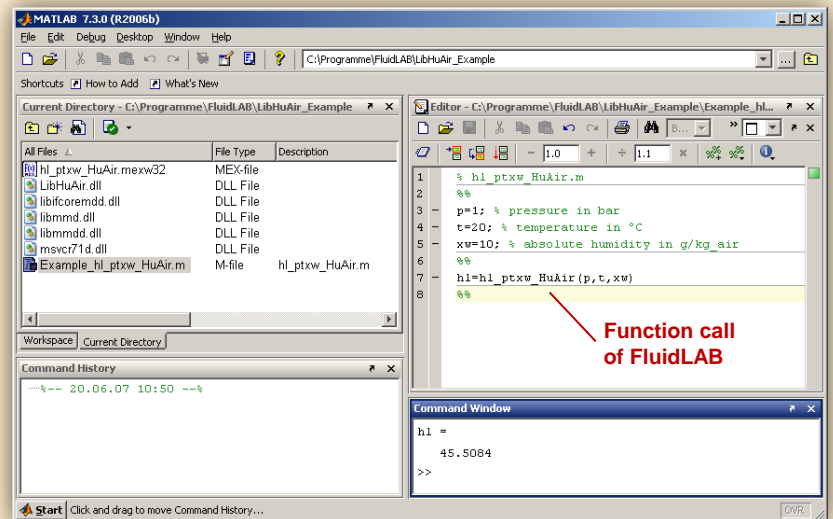
The property libraries can be used in Mathcad[®].



Function call of FluidMAT

Add-In FluidLAB for MATLAB[®]

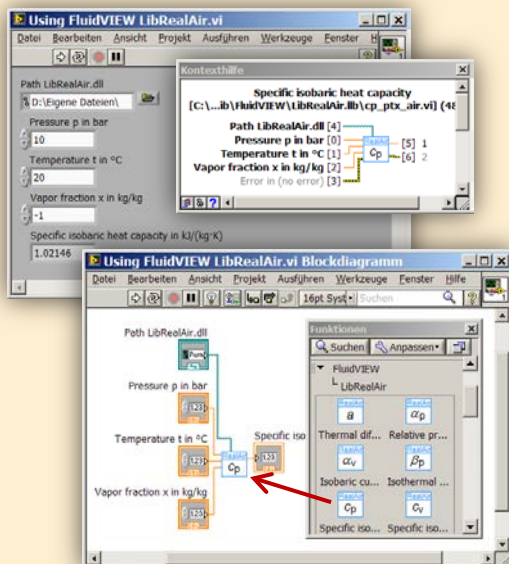
Using the Add-In FluidLAB the property functions can be called in MATLAB[®].



Function call of FluidLAB

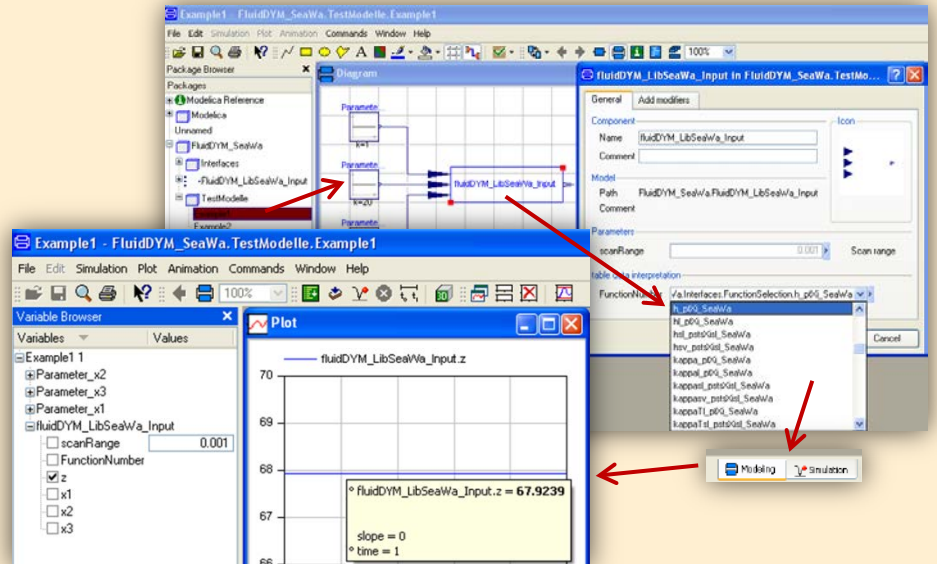
Add-On FluidVIEW for LabVIEW[™]

The property functions can be calculated in LabVIEW[™].



Add-In FluidDYM for DYMOLA[®] (Modelica) and SimulationX[®]

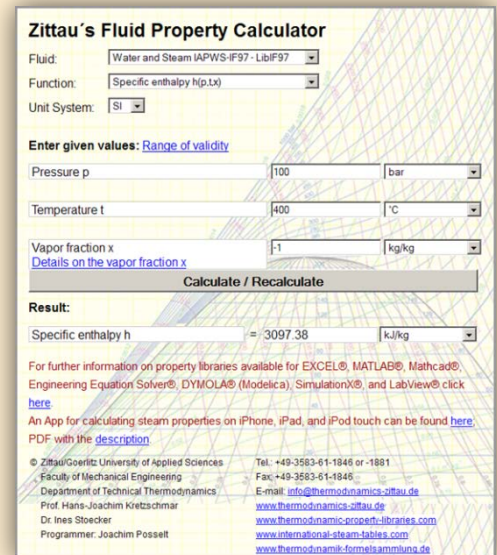
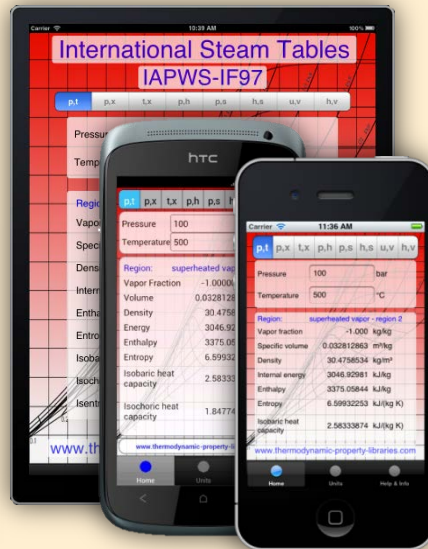
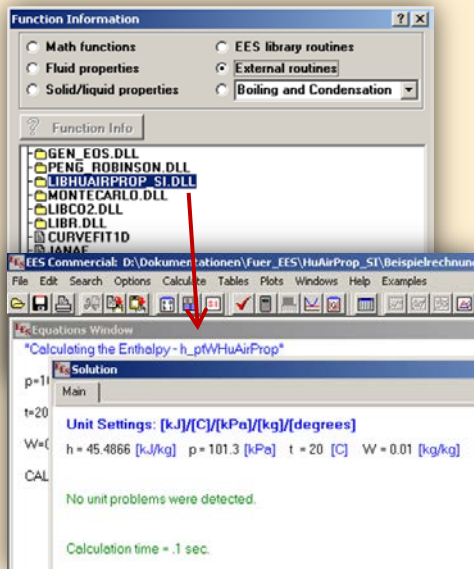
The property functions can be called in DYMOLA[®] and SimulationX[®].



Add-In FluidEES for Engineering Equation Solver®

App International Steam Tables for iPhone, iPad, iPod touch, Android smart phones and tablets

Online Property Calculator at www.thermodynamics-zittau.de



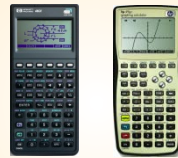
Property Software for Pocket Calculators

FluidCasio



fx 9750 G II CFX 9850 fx-GG20 CFX 9860 G Graph 85 ALGEBRA FX 2.0

FluidHP



HP 48 HP 49

FluidTI



TI Nspire CX CAS TI 83 TI 84 TI 89 TI Voyage 200

For more information please contact:

Zittau/Goerlitz University of Applied Sciences
 Department of Technical Thermodynamics
 Professor Hans-Joachim Kretzschmar
 Dr. Sebastian Herrmann
 Theodor-Koerner-Allee 16
 02763 Zittau, Germany

Internet: www.thermodynamics-zittau.de
 E-mail: hj.kretzschmar@hszg.de
 Phone: +49-3583-612-4846 or -4817
 Fax: +49-3583-612-5-4846

The following thermodynamic and transport properties^a can be calculated in Excel®, MATLAB®, Mathcad®, Engineering Equation Solver® (EES), DYMOLA® (Modelica), SimulationX® and LabVIEW™:

Thermodynamic Properties

- Vapor pressure p_s
- Saturation temperature T_s
- Density ρ
- Specific volume v
- Enthalpy h
- Internal energy u
- Entropy s
- Exergy e
- Isobaric heat capacity c_p
- Isochoric heat capacity c_v
- Isentropic exponent κ
- Speed of sound w
- Surface tension σ

Transport Properties

- Dynamic viscosity η
- Kinematic viscosity ν
- Thermal conductivity λ
- Prandtl number Pr

Backward Functions

- $T, v, s(p, h)$
- $T, v, h(p, s)$
- $p, T, v(h, s)$
- $p, T(v, h)$
- $p, T(v, u)$

Thermodynamic Derivatives

- Partial derivatives can be calculated.

^a Not all of these property functions are available in all property libraries.